

Coloured Glaze. Solar Hand Rail

ELECTRICAL

Electrical parameters under standard test conditions (STC)

Electrical parameters under standard test conditions (STC)			JS XXXDG-30b (XXX=Pmax)
Module type			JS XXXDG-30b (XXX=Pmax)
Power output	P_{max}	W	93
Power output tolerances	ΔP_{max}	W	0-5
Module efficiency	η_m	%	5.5
Voltage at Pmax	V_{mpp}	V	33.0
Current at Pmax	I_{mpp}	A	2.82
Open-circuit voltage	V_{oc}	V	39.6
Short-circuit current	I_{sc}	A	2.96

STC: Irradiance 1000W/m², battery temperature 25 °C, air quality AM1.5, according to EN 60904-3.
The average relative efficiency decay at 200W/m² is 3.0% according to EN 60904-1.

Electrical parameters at nominal operating temperature (NOCT) (NOCT)

Electrical parameters at nominal operating temperature (NOCT) (NOCT)			
Power output	P_{max}	W	70.7
Voltage at Pmax	V_{mpp}	V	31.3
Current at Pmax	I_{mpp}	A	2.26
Open-circuit voltage	V_{oc}	V	37.6
Short-circuit current	I_{sc}	A	2.38

NOCT: Under the conditions of irradiance 800W/m², 20 °C ambient temperature, and 1m/s wind speed, the operating temperature of the modules in the open-circuit state.

Temperature Characteristic

Nominal operating cell temperature	NOCT	°C	45 +/- 2
Temperature coefficient of Pmax	γ	%/°C	-0.36
Temperature coefficient of Voc	β_{Voc}	%/°C	-0.30
Temperature coefficient of Isc	α_{Isc}	%/°C	0.05

Operating Conditions

Maximum System Voltage	1500V _{DC}
Maximum Fuse Rating	20A
Operating temperature	-40°C- 85°C
Max.static load, front(e.g.,snow and wind)	5400Pa
Max.static load,back(e.g.,wind)	2400Pa
Hail impact test (diameter/velocity)	25mm / 23m/s

Construction Materials

Glass (material / thickness)	low-iron tempered glass / 4mm
Cell (quantity / material / dimensions)	Mono / 158.75mm*158.75mm
Encapsulating material	PVB
Junction box (protection degree)	≥IP67
Cable (length / cross-sectional area)	300mm / 4mm ² / Customizable
Plug connector (type / protection degree)	MC4 / IP67

• Due to continuous innovation, research and product improvement, the specifications in this product information sheet are subject to change without prior notice. The specifications may deviate slightly and are not guaranteed.
• The data do not refer to a single module and they are not part of the sale, they only serve for comparison to different module types.

Qualifications and Certifications

IEC 61215, IEC 61730, 3C, ISO 9001:2015, ISO 14001:2015, ISO 45001: 2018.

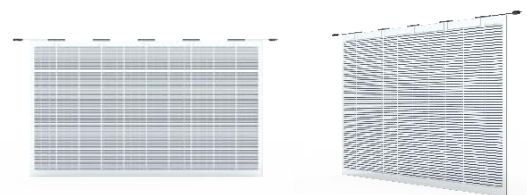
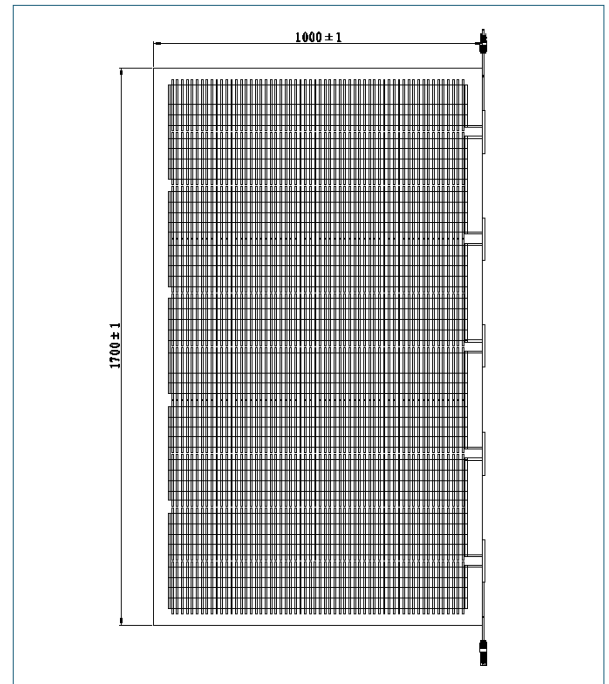
© Baoding Jiasheng Photovoltaic technology Co., Ltd.

GS_COLORED GLAZE 600 CELL_CN_20210416_V02

GENERAL CHARACTERISTICS

Dimensions (length/width)	1700 mm / 1000mm
Weight	39kg

Unit:mm



Warning: Please read the module installation instructions carefully before operating, installing and running Jiasheng' s modules.

Jiasheng Partners:

Baoding Jiasheng Photovoltaic Technology Co., Ltd.

Mail : commerce.gs@yingligroup.com

Hotline: 400-663-0808

Tel: +86-0312-7510221

WWW.GAINSOLARBIPV.COM

