

# Solar roofing system

- New photovoltaic green building materials Can replace traditional roof tiles
- Provide green zero-carbon energy for urban renewal and beautiful countryside



## High Security

Class A fire protection | High strength | Same life span as the building



## High efficiency

All-in-one module full-floor design | High installation capacity | High power generation



## Excellent waterproof

Multiple waterproof design | Passed GB/T 36584-2018 5.1 waterproof test



## Aesthetics

Texture and color can be customized | Roof overall design | Fashionable and beautiful



## High self-cleaning

High durable cleaning by custom structure and surface Texture | Strong self-melting snow



# Solar roofing system

## PHYSICAL PARAMETERS

Product model	JS35DG-5e 1/2	JS87DG-12e 1/2
Dimensions	630*480mm	1260*480mm
Weight	9kg	16.5kg
Glass (Material/Thickness)	tempered glass/3.2mm	tempered glass/3.2mm
Cell (material / dimensions)	182*91mm (2*5)	182*91mm (2*12)
Junction box	≥IP67	≥IP67
Cable type	450mm / 4mm <sup>2</sup>	900mm / 4mm <sup>2</sup>
Plug connector	MC4	MC4
Life span	>30years	>30years

## Electrical parameters at standard test conditions (STC)

Solar cells	Monocrystalline	Monocrystalline
Power output ( $P_{max}$ )	35W	87W
Module efficiency (%)	15.9%	18.4%
Voltage at Pmax ( $V_{mpp}$ )	5.7V	13.7V
Current at Pmax ( $I_{mpp}$ )	6.14A	6.35A
Open-circuit current ( $V_{oc}$ )	6.74V	16.2V
Short-circuit current ( $I_{sc}$ )	6.53A	6.75A

STC: 1000W/m<sup>2</sup> irradiance , 25 degree cell temperature, AM1.5g.

## PERFORMANCE GRADE

Color	Black tiles
Load grade	2400Pa
Fireproofing grade	ClassA
anti-hail grade	Φ25mm/23m/s
Operating temperature	-40°C~+85°C
Operating humidity	0-80%

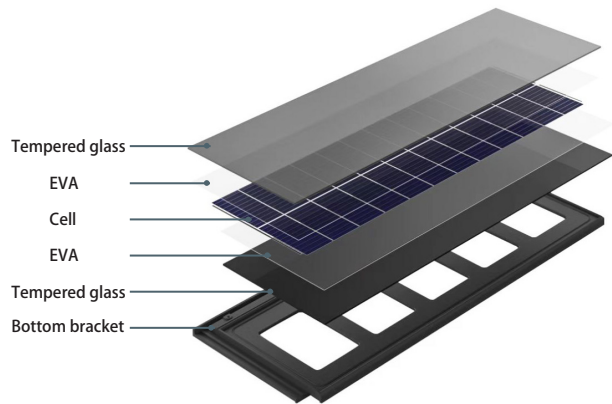
## OPERATING CONDITIONS

Max. system voltage	1500V <sub>DC</sub>
Max. series fuse rating	20A
Operating temperature range	-40°C~+85°C
Max. static load, front (e.g., snow)	5400Pa
Max. static load, back (e.g., wind)	2400Pa
Max. hailstone impact (diameter / velocity)	25mm / 23m/s

## Thermal Characteristics

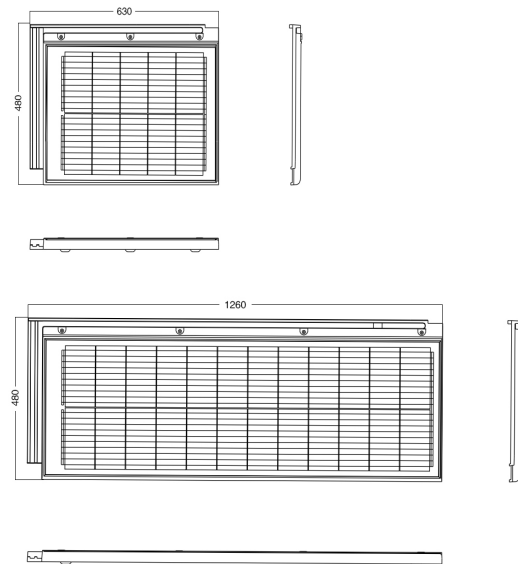
Nominal operating cell temperature	NOCT	°C	45 ± 2
Temperature coefficient of $P_{max}$	$\gamma$	%/°C	-0.36
Temperature coefficient of $V_{oc}$	$\beta_{Voc}$	%/°C	-0.30
Temperature coefficient of $I_{sc}$	$\alpha_{Isc}$	%/°C	0.05

## CONSTRUCTION



## DIMENSIONS

Unit : mm



## PRODUCT PICTURE

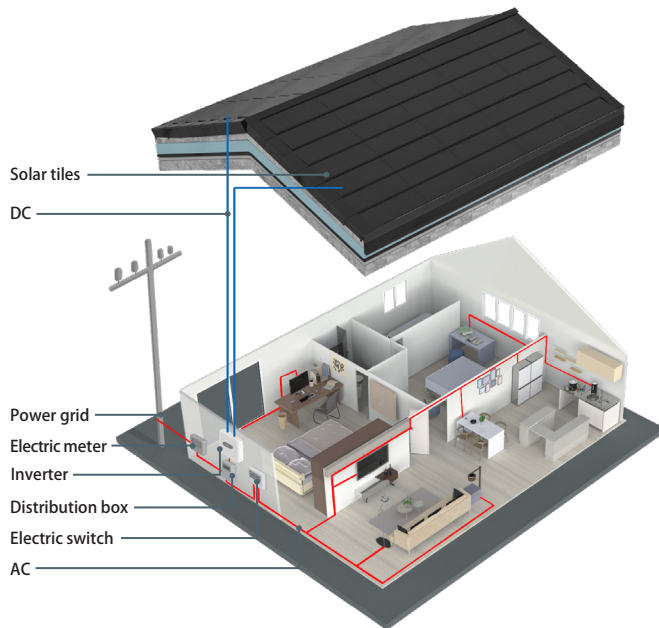


## QUALIFICATIONS AND CERTIFICATIONS

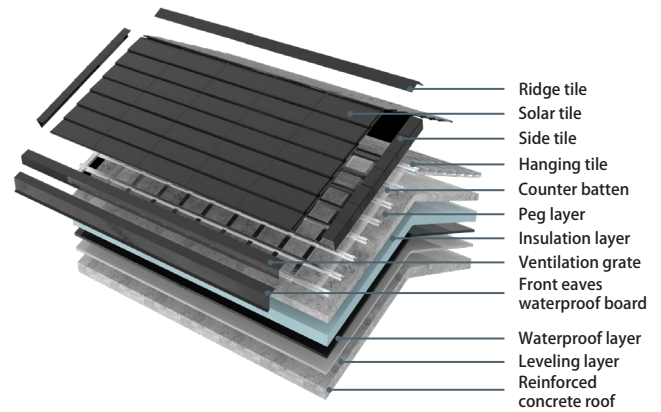
IEC 61215, IEC 61730, 3C, ISO 9001:2015, ISO 14001:2015, ISO 45001: 2018.

# Solar roofing system

## ELECTRICAL SYSTEM



## INSTALLATION STRUCTURE



## CASE PROJECT



Due to continuous innovation, research and product improvement, the specifications in this product information sheet are subject to change without prior notice. The specifications may deviate slightly and are not guaranteed.

The data do not refer to a single module and they are not part of the offer, they only serve for comparison to different module types.

## QUALIFICATIONS AND CERTIFICATIONS

IEC 61215, IEC 61730, 3C, ISO 9001:2015, ISO 14001:2015, ISO 45001: 2018.

**Baoding Jiasheng Photovoltaic Technology Co., Ltd.**

E-mail : [commerce.gs@yingligroup.com](mailto:commerce.gs@yingligroup.com)

Hotline: 400-663-0808/+86-0312-7510221

web address: [www.jiashengguangdian.com](http://www.jiashengguangdian.com)

Address: No. 88 Hengyuan West Road, Baoding National High-tech Zone, Hebei Province, China