

T-Max Tile_A Series

Solar roofing system

- Solar Roof Tile as the New Type of Building Materials Provide Green Energy for You
- One-Stop Solution Home Usings, Roof Tile and Solar Energy Intergrate Design



Security and Reliable

Fireproof class A | High compression resistance | Same life span as the building



High Efficiency

Integrated roof design | More installation capacity | More power generation



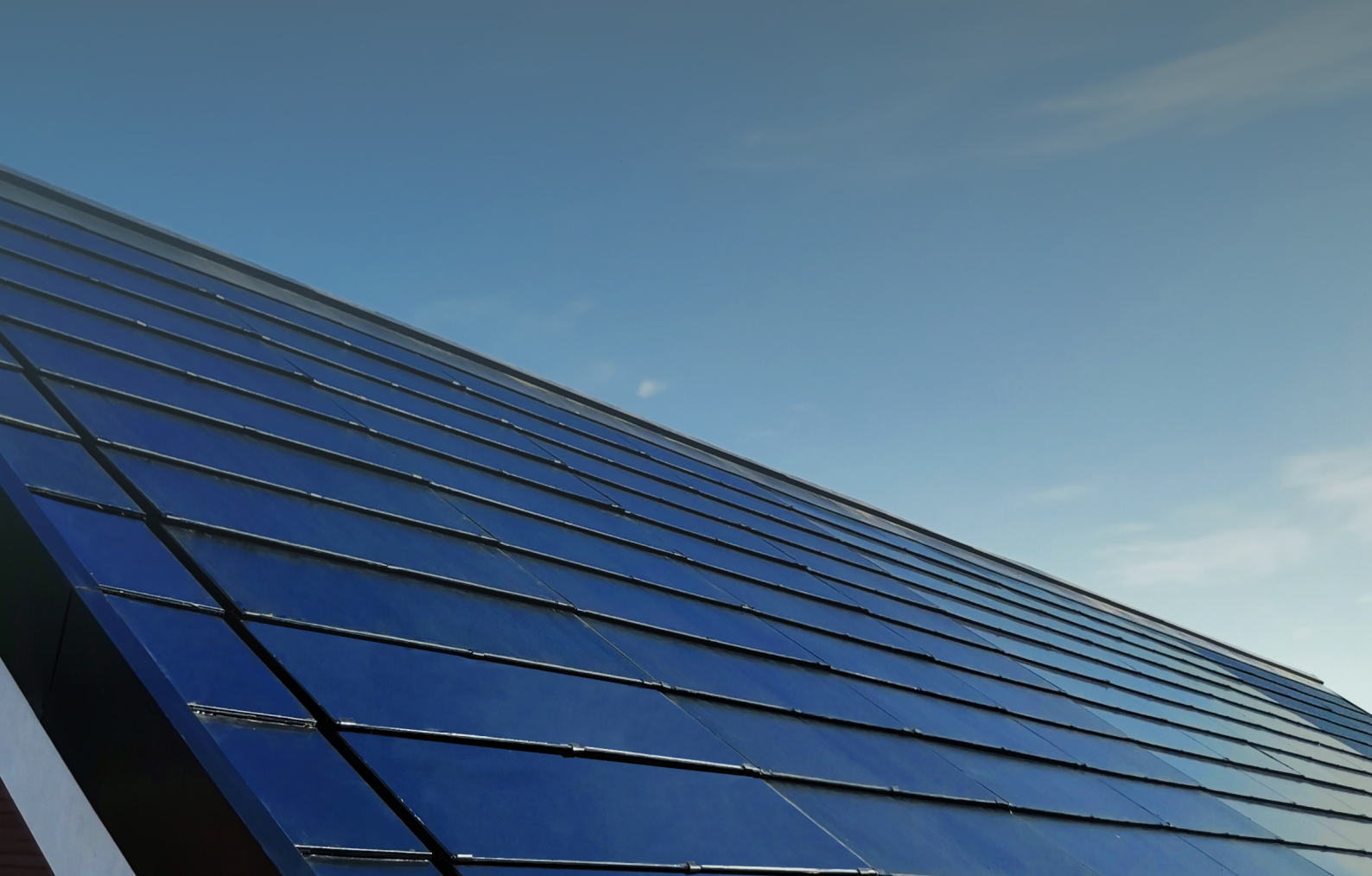
Installation Convenience

Buckle design | Positioning overlap | Quick fixation



Self-Cleaning

Double glass hidden structure avoids the formation of mud belts | Powerful snow melting



T-Max Tile_A Series

PHYSICAL PARAMETERS

Product model	JS90DG-13e 1/2	JS75DG-13e 1/2	JS78DG-13e 1/2
Color	Black	Red(JSA10-202)	Grey(JSA10-102)
Dimensions	1260*480mm		
Weight	8.5kg		
Glass (material/thickness)	Tempered glass/3.2mm+3.2mm		
Cell	182*91mm (2*12)		
Junction box	≥IP67		
Cable type	900mm / 4mm ²		
Plug connector	MC4		
Life span	>30years		

ELECTRICAL PARAMETERS(STC)

Solar cells	Monocrystalline		
Power output (P _{max})	90W	75W	78W
Module efficiency (%)	18.9%	15.8%	16.4%
Voltage at Pmax (V _{mpp})	13.7V	13.4V	13.5V
Current at Pmax (I _{mpp})	6.57A	5.59A	5.78A
Open-circuit current (V _{oc})	16.3V	16.1V	16.2V
Short-circuit current (I _{sc})	6.89A	5.93A	6.07A

STC: 1000W/m² irradiance, 25 degree cell temperature, AM1.5g.

PERFORMANCE GRADE

Load grade	2400Pa
Fireproofing grade	ClassA
Anti-hail grade	Φ25mm/23m/s
Operating temperature	-40°C~+85°C
Operating humidity	0-80%

OPERATING CONDITIONS

Max. system voltage	1500V _{dc}
Max. series fuse rating	20A
Operating temperature range	-40°C~+85°C
Max. static load, front (e.g., snow)	5400Pa
Max. static load, back (e.g., wind)	2400Pa
Max. hailstone impact (diameter / velocity)	25mm / 23m/s

THERMAL CHARACTERISTICS

Nominal operating cell temperature	NOCT	°C	45 ± 2
Temperature coefficient of P _{max}	γ	%/°C	-0.36
Temperature coefficient of V _{oc}	β _{Voc}	%/°C	-0.30
Temperature coefficient of I _{sc}	α _{Isc}	%/°C	0.05

Due to continuous innovation, research and product improvement, the specifications in this product information sheet are subject to change without prior notice. The specifications may deviate slightly and are not guaranteed.

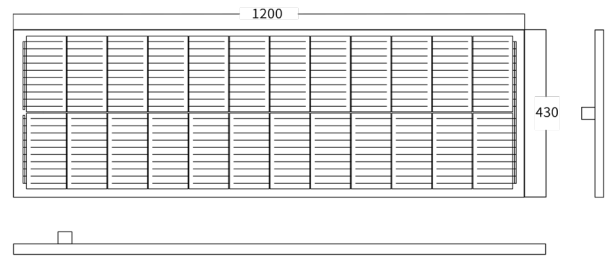
The data do not refer to a single module and they are not part of the offer, they only serve for comparison to different module types.

QUALIFICATIONS AND CERTIFICATIONS

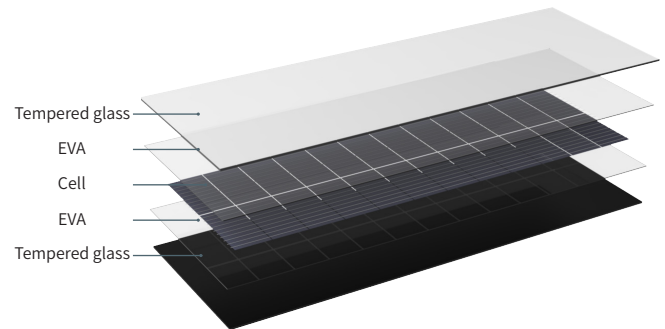
IEC 61215, IEC 61730, 3C, ISO 9001:2015, ISO 14001:2015, ISO 45001: 2018.

DIMENSIONS

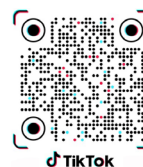
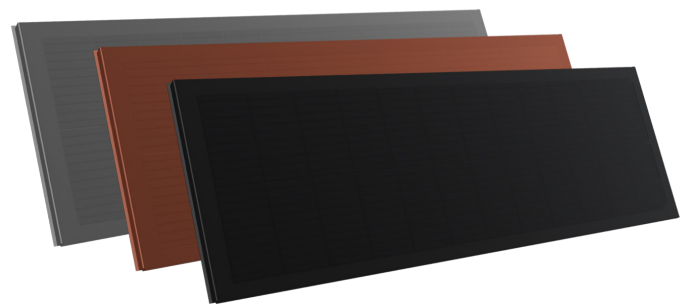
Unit : mm



CONSTRUCTION



PRODUCT PICTURE



TikTok

Baoding Jiasheng Photovoltaic Technology Co., Ltd.

E-mail: commerce.gs@yingligroup.com

Hotline: +86-0312-7510221

Address: No. 88 Hengyuan West Road, Baoding

National High-tech Zone, Hebei Province, China

Web address: www.gainsolarbipv.com