

T-Max Tile_0 Series

Solar roofing system

- Solar Roof Tile as the New Type of Building Materials Provide Green Energy for You
- One-Stop Solution Home Usings, Roof Tile and Solar Energy Intergrate Design



Security and Reliable

Fireproof class A | High compression resistance | Same life span as the building



High Efficiency

Integrated roof design | More installation capacity | More power generation



Waterproof Structure

Triple waterproof structure | GB/T 36584-2018 5.1



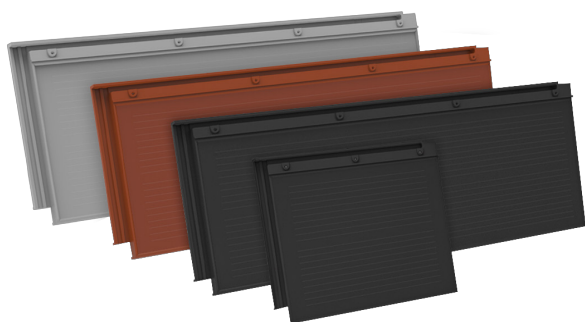
Easy Maintenance

Compound integrated design for drainage | Ventilation and heat dissipation | Easy Maintenance



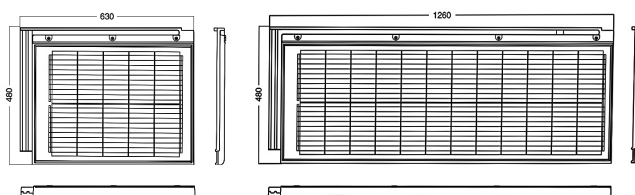
T-Max Tile_O Series

PRODUCT PICTURE



DIMENSIONS

Unit : mm



PHYSICAL PARAMETERS

Color	Black		Red(JSA10-202)		Grey(JSA10-102)	
Product model	JS38DG-5e 1/2	JS90DG-13e 1/2	JS31DG-5e 1/2	JS75DG-13e 1/2	JS32DG-5e 1/2	JS78DG-13e 1/2
Dimensions	630*480mm	1260*480mm	630*480mm	1260*480mm	630*480mm	1260*480mm
Weight	7.5kg	15.5kg	7.5kg	15.5kg	7.5kg	15.5kg
Cell (material / dimensions)	182*91mm (2*5)	182*91mm (2*12)	182*91mm (2*5)	182*91mm (2*12)	182*91mm (2*5)	182*91mm (2*12)
Junction box	≥IP67	≥IP67	≥IP67	≥IP67	≥IP67	≥IP67
Cable type	450mm / 4mm ²	900mm / 4mm ²	450mm / 4mm ²	900mm / 4mm ²	450mm / 4mm ²	900mm / 4mm ²
Glass (material/thickness)	Tempered glass/3.2mm+3.2mm					
Plug connector	MC4					
Life span	>30years					

ELECTRICAL PARAMETERS(STC)

Solar cells	Monocrystalline					
Power output (P _{max})	38W	90W	31W	75W	32W	78W
Module efficiency (%)	17.3%	18.9%	14.1%	15.8%	14.5%	16.4%
Voltage at Pmax (V _{mpp})	5.71V	13.7V	5.58V	13.4V	5.63V	13.5V
Current at Pmax (I _{mpp})	6.65A	6.57A	5.56A	5.59A	5.68A	5.78A
Open-circuit current (V _{oc})	6.79V	16.3V	6.71V	16.1V	6.76V	16.2V
Short-circuit current (I _{sc})	6.97A	6.89A	5.89A	5.93A	5.96A	6.07A

STC: 1000W/m² irradiance , 25 degree cell temperature, AM1.5g.

PERFORMANCE GRADE

Load grade	2400Pa
Fireproofing grade	ClassA
Anti-hail grade	Φ25mm/23m/s
Operating temperature	-40°C~+85°C
Operating humidity	0-80%

OPERATING CONDITIONS

Max. system voltage	1500V _{DC}
Max. series fuse rating	20A
Operating temperature range	-40°C~+85°C
Max. static load, front (e.g., snow)	5400Pa
Max. static load, back (e.g., wind)	2400Pa
Max. hailstone impact (diameter / velocity)	25mm / 23m/s

QUALIFICATIONS AND CERTIFICATIONS

IEC 61215, IEC 61730, 3C, ISO 9001:2015, ISO 14001:2015, ISO 45001: 2018.

THERMAL CHARACTERISTICS

Nominal operating cell temperature	NOCT	°C	45 ± 2
Temperature coefficient of P _{max}	γ	%/°C	-0.36
Temperature coefficient of V _{oc}	β _{Voc}	%/°C	-0.30
Temperature coefficient of I _{sc}	α _{Isc}	%/°C	0.05

Due to continuous innovation, research and product improvement, the specifications in this product information sheet are subject to change without prior notice. The specifications may deviate slightly and are not guaranteed.

The data do not refer to a single module and they are not part of the offer, they only serve for comparison to different module types.



Baoding Jiasheng Photovoltaic Technology Co., Ltd.

E-mail: commerce.gs@yingligroup.com

Hotline: +86-0312-7510221

Address: No. 88 Hengyuan West Road, Baoding

National High-tech Zone, Hebei Province, China

Web address: www.gainsolarbipv.com